



Set Up Your JustBoom DAC and Case

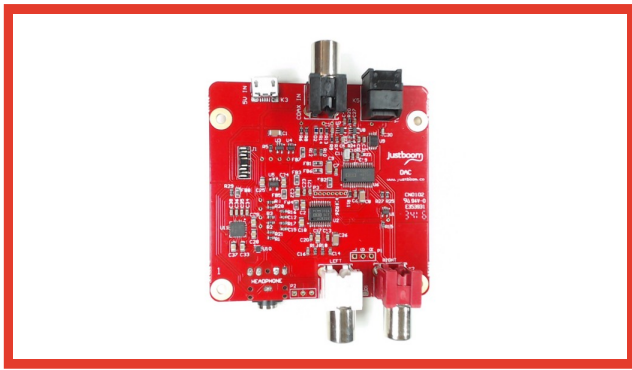
This guide will show you how to set up the JustBoom DAC.



Unpack your JustBoom DAC.

You should find:

- 1 JustBoom DAC board
- 1 info card
- 1 Roon Labs voucher
- 1 Max2Play voucher
- 2 JustBoom stickers



Section 1 – Case Assembly

Step 1 – Unpack your JustBoom DAC.

If you are also installing the JustBoom AMP then skip to Section 2 – Case Assembly with the optional JustBoom Amp.



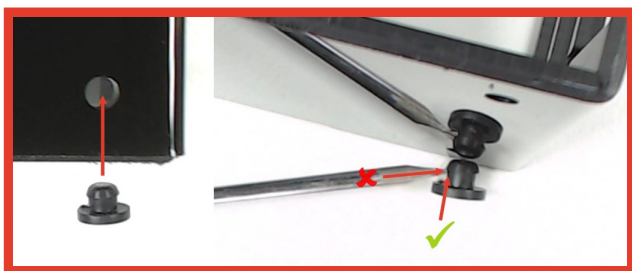
Step 2 – The JustBoom DAC and Amp case is the perfect enclosure for the JustBoom DAC.

After removing the protective film exercise a gentle outward lift at the base of the top part of the case as indicated by the arrows in the picture on the left.

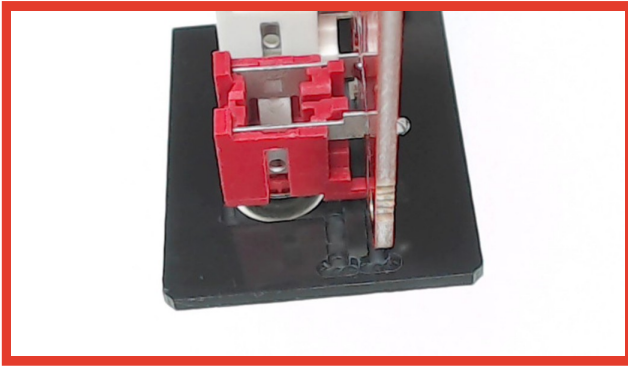


This should allow you to detach the top cover from the bottom of the case.

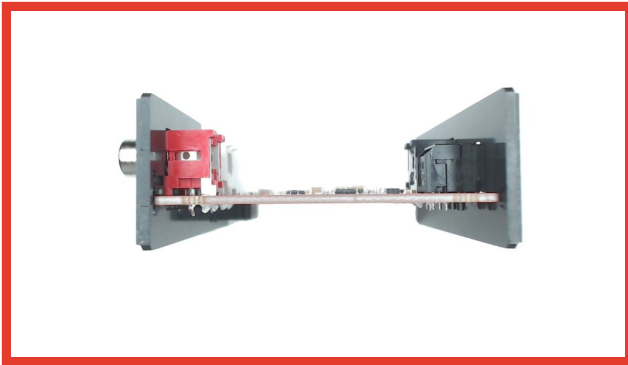
Within the case you will find 4 rubber feet and 2 metal screws. Here is how it will look like once opened.



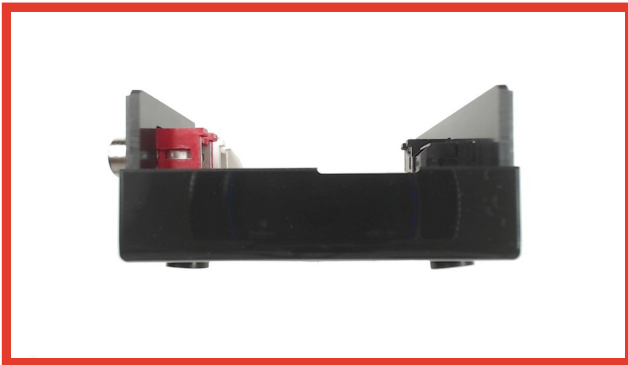
Step 3 – To install the rubber feet on the bottom part of the case you will either have to push and twist them through one of the 4 the holes or help yourself with a small screwdriver to tuck in the top part of the feet within hole as shown below. Be careful not to cut through the feet and rather than using the tip of the screwdriver use the flat surface to push the head of rubber foot in.



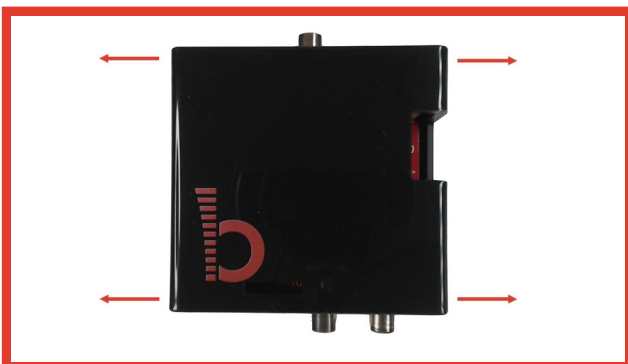
Step 4 - Place the board onto one of the side panels so that it slots in the grooves as shown in the picture.



Step 5 - In the same way add the other side panel.



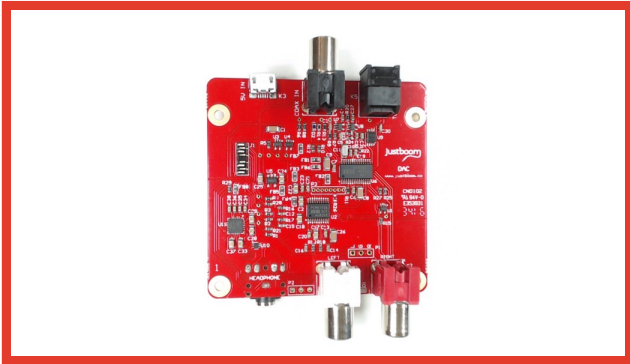
Step 6 - Place the board and the side panels in the bottom part of the case by making sure that the side panels are sliding within the plastic guides of the case. The small indentation of the bottom part of the case should be visible when looking at the case with the RCAs on the left and the Digital inputs on the right.



Step 7 - Place the top of the case on and as for when opening the case at the beginning, pull slightly the two sides of the bottom part of the case so that the plastic teeth can more easily slide in and hook on to the top part.

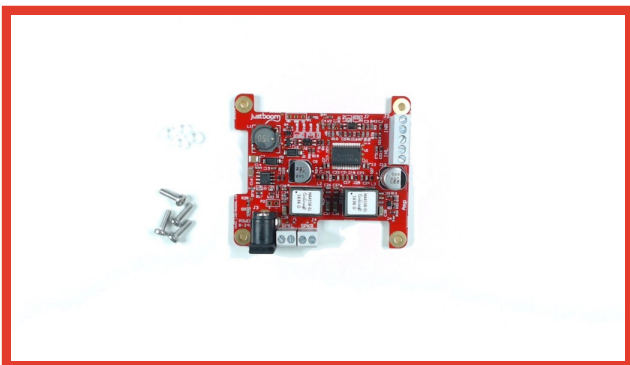


Your JustBoom is now ready.



Section 2 - Case Assembly with the Optional JustBoom Amp

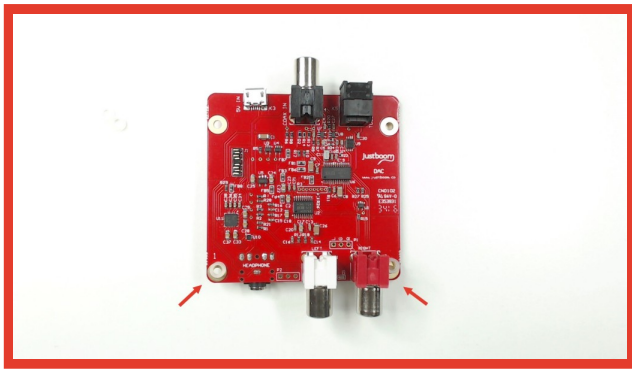
The DAC can host the JustBoom Amp which sits on top of the DAC.



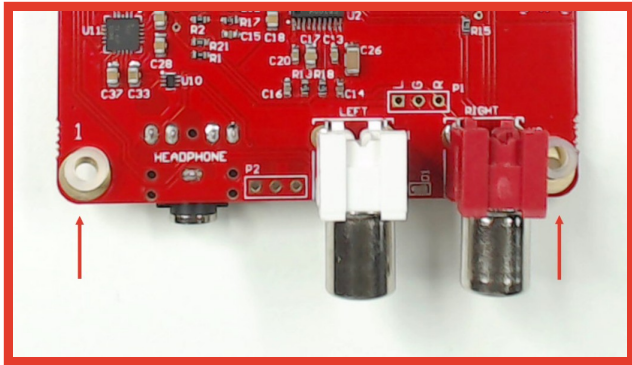
Step 1 – Remove the JustBoom Amp from it's packaging. You should find:

- 1 JustBoom Amp board
- 4 metal bolts
- 4 plastic spacers
- 4 metal nuts
- 1 info card
- 1 Roon Labs voucher
- 1 Max2Play voucher
- 2 JustBoom stickers

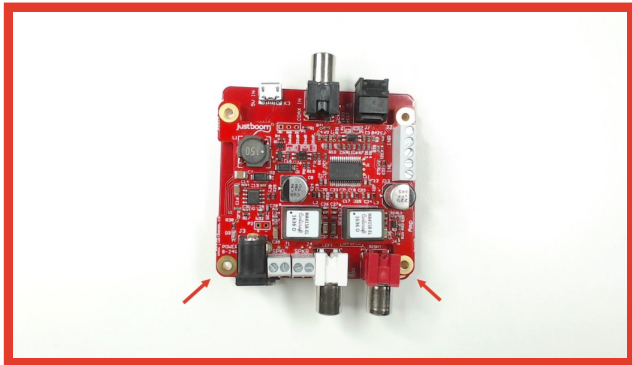
To install the JustBoom Amp you will only require the 2 metal bolts, the 2 plastic spacers and 2 metal nuts.



Step 2 - Place the small plastic spacers on top of the DAC as shown here.



Remember that only two of the spacers are to be used and they will have to be positioned on the side of the RCA connectors.



Step 3 - Align the JustBoom Amp on the DAC as shown here and put the two cards on a side.



Step 4 - The JustBoom DAC and Amp case is the perfect enclosure for the JustBoom DAC.

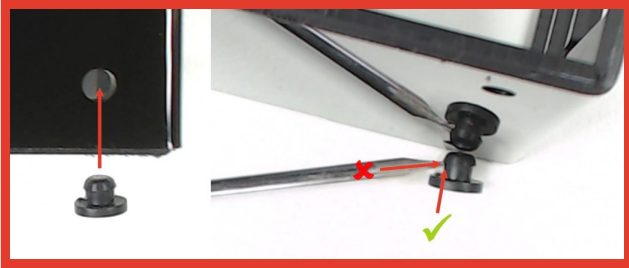
After removing the protective film exercise a gentle outward lift at the base of the top part of the case as indicated by the arrows in the picture on the left.



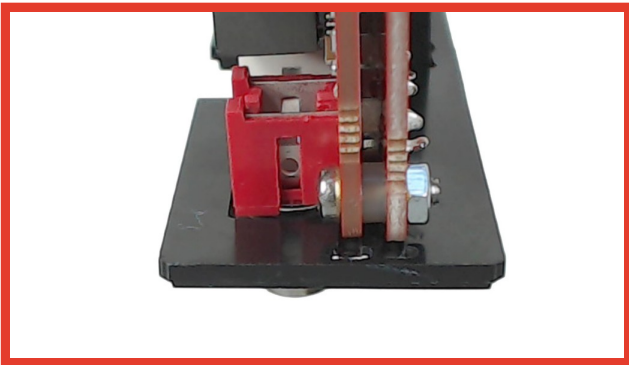
This should allow you to detach the top cover from the bottom of the case.

Within the case you will find 4 rubber feet and 2 metal screws. Here is how it will look like once opened.

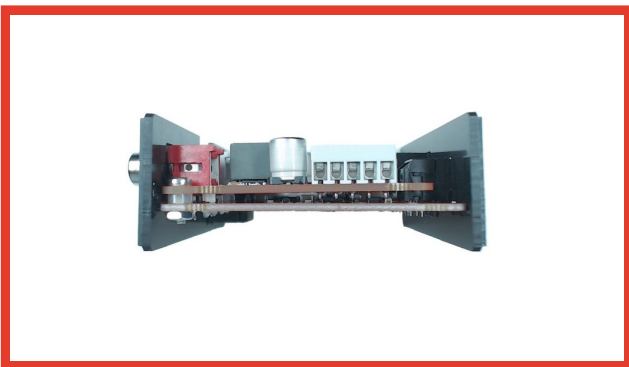
Note the white spacers within the top part of the case, they will hold down the Amp on the DAC once the enclosure is closed.



Step 5 - To install the rubber feet on the bottom part of the case you will either have to push and twist them through one of the 4 the holes or help yourself with a small screwdriver to tuck in the top part of the feet within hole as shown below. Be careful not to cut through the feet and rather than using the tip of the screwdriver use the flat surface to push the head of rubber foot in.



Step 6 - Place the boards onto one of the side panels so that they slot in the grooves as shown in the picture.



Step 7 - In the same way add the other side panel.



Step 8 - Place the board and the side panels in the top part of the case by making sure that the side panels are sliding within the plastic guides of the case. The big opening of the top part of the case should be visible

when looking at the case with the RCAs on the left and the Digital inputs on the right.



Step 9 – Fit the bottom part of the case. The small indentation on it should be visible when looking at the case with the RCAs on the left and the Digital inputs on the right.



Step 10 – As for when opening the case at the beginning, pull slightly the two sides of the bottom part of the case so that the plastic teeth can more easily slide in and hook on to the top part.



Your JustBoom is now ready.

Please use a power supply compatible with the specifications from the picture on the side. Check this page for additional information to help you choose the right power supply.

RECENT TWEETS



@CrazySqueak
Feel free to return it for a replacement. I've got the one from video that definitely

CONTACT INFO

Unit 4 Bells Yew
Green Business
Court
Bells Yew Green
East Sussex
TN3 9BJ
United Kingdom

PAGES

About Us
Contact
Distributors
FAQ
Get Started
Home
JustBoom Software
Guides

Audio. It's what we do. We make our products simple, easy to use, and always keep in mind that high definition music should be

affordable and
enjoyed by friends,
family... everyone.

opens on my
desk...
twitter.com/i/web/status/8...
10 hours ago

Email:
support@justboom.co

Partners
Product Guide
Products
Technical Guides
Testimonials
Tutorials
Why Justboom



A selection of
JustBoom
products is
now available
from the fine
folk over
[@seeedstudio](https://www.seeedstudio.com)
- order your
JustBoom
today
seeedstudio.com/s/JustBoom.html
10 hours ago

